



Digs deeper than most backhoe loaders



Reaches farther than most backhoe loaders



Higher digging forces for Tough job sites



Good for pipe-laying operations, handles bigger diameter pipes

Best-in-class dump height for easy loading into the center of the tipper body.

Parallelogram / Double cylinder arrangement enables Auto Leveling

ATTACHMENTS & ACCESSORIES



TECHNICAL SPECIFICATIONS

ENGINE

Make Cummins
Model 4BTAA 3.9 99C 32
Type Turbo-charged, inter-cooled direct injection
Gross Power 99 HP (73.4 kW) @ 2,200 RPM
Max. Torque 410 Nm @ 1,350 RPM
Battery 12 V, 150 Ah
No. of Cylinders 4 nos.
Bore 102 mm
Stroke 120 mm
Displacement 3,922 cc
Alternator 95 Amps

HYDRAULIC SYSTEM

Excellent Hydraulic System (EHS) with Tandem gear pump for lower fuel consumption
System Pressure 245 bar
Max. Pump Flow 128 lpm @ 2,200 RPM
Control Valve: Sectional valves that are individually replaceable.

TRANSMISSION

- Equipped with Carraro-make transmission with synchro-shuttle
- Solenoid-type mechanism allows smooth, easy forward and reverse movements.
- Transmission allows for four forward and two reverse speeds

AXLE

Front Axle

- Heavy-duty, Powered Axle.
- Floats up to +/- 8 degrees to handle uneven terrains
- 4WD - Front axle king pin angle = 7° camber angle = 1.5 Ratio Total = 13,714:1

Rear Axle

- Rear Carraro axle that is heavy-duty and long-lasting
- High brake torque

SPEEDS

Forward

1st 4 kmph
2nd 7 kmph
3rd 17 kmph
4th 29 kmph

Reverse

1st 5 kmph
2nd 8 kmph
3rd Not recommended
4th Not recommended

@1850 RPM & Standard GP tyres

BACKHOE PERFORMANCE

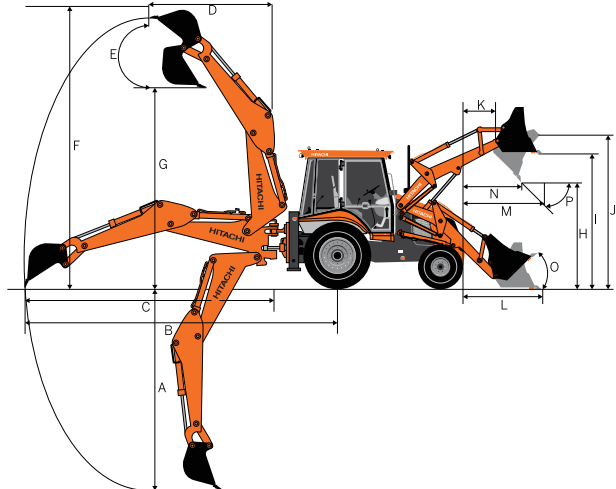
Parameter	Standard Backhoe	Long Reach Backhoe
Backhoe Bucket Digging force	5685 kgf	5534 kgf
Backhoe Arm Digging force	3220 kgf	3136 kgf
Backhoe Boom length	2.46 m	2.76 m

Slider Frame Travel - 1050 mm
Backhoe Arm Length - 196 mm

Bucket Width (STD) - 752 mm
Bucket Width (Option) - 661 mm / 600 mm

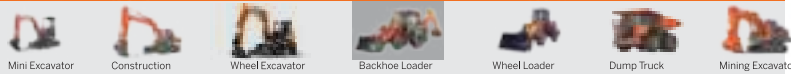
Dim. Notations	Dimension (Standard Backhoe)	Dimension (Long Reach Backhoe)	Description
A	4700	5003	Max. Digging depth
B	6880	7196	Max. reach from Rear axle Centre
C	5440	5798	Max. reach from Slew Centre
D	2001	2520	Max. reach during loading from Slew Centre
E		180°	Bucket rotation angle
F	6050	6526	Max. Cutting Height in Backhoe (Stabilizer fully extended condition)
G	4200	4476	Max. Loading Height in Backhoe (Stabilizer fully extended condition)

All dimensions are in mm



Hitachi Construction Machinery Middle East Corporation FZE
P.O. Box 61052, R/A 12 Street No. N150, Jebel Ali Free Zone, Dubai U.A.E
Phone: +971-4-883 3352 | Email: HMEC-English-Info@hmec.ae | www.hitachicm.com/ae

OUR RANGE OF PRODUCTS



BRAKES

Service Brake: Oil-immersed wet disc, that is hydraulic-actuated, with independent pedals for better control in narrow spaces
Parking Brake: Hand-operated disc brake on the rear axle

STEERING

Type: Hydraulic actuation with priority for smooth control
Turning Radius Inner wheels not braked
Outside Loader Bucket 11.73 m
Outside Wheels 8.9 m

TYRES

Front Wider (4WD) 12.5/80-18, 12 & 14PR
Rear (Std.) 16.9 x 28, 12 PR
Rear (HD) 14x25, 20 PR

REFILL CAPACITY

Fuel Tank 128 L
Engine Oil 10.0 L
Engine Coolant 13 L
Transmission Oil 16 L
Rear Axle Oil 17.5 L
Hydraulic Oil Refill 86 L
Front Axle (Live) 9.1 L (4WD)

LOADER PERFORMANCE

Below ground dig depth 55 mm
Loader bucket break-out force 6,499 kgf
Loader arm break-out force 5,135 kgf
Payload 1,920 kg
Standard Tilt Bucket 1.1 m³
Optional Bucket 6-in-1 bottom dump bucket 1.0m³

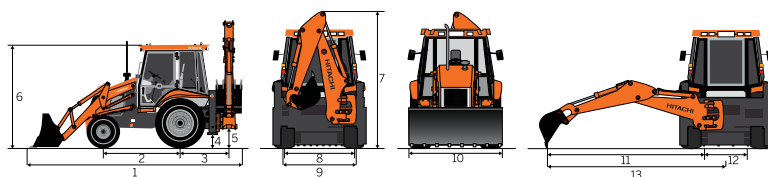
Dim. Notations	Dimension	Description
H	2,842	Dump height
I	3,509	Load over height
J	3,729	Pin height
K	454	Pin forward reach
L	1,817	Reach at ground level
M	1,432	Max. reach at full height
N	982	Reach in bucket dump position
Bucket Angles		
O	45°	Bucket roll-in angle
P	45°	Bucket rotation angle

All dimensions are in mm

MAIN MACHINE STATIC DIMENSIONS

Symbol	Dimension (Standard Backhoe)	Dimension (Long Reach Backhoe)	Description
1		6414	Transport Length
2		2110	Wheelbase
3		1415	Slew Centre to Rear Axle Centre
4		295	Minimum Ground Clearance point
5		485	Slew ground clearance
6		2885	Height of Cabin
7	3530	3820	Machine Transportation height
8		1710	Rear Wheel tread width
9		1900	Front Wheel Tread width
10		2357	Loader Bucket Width
11	5520	5798	Max reach from Slew center
12		1050	Total Side Shift Travel
13	5993	6323	Max side reach to Machine center

All dimensions are in mm



KO-EN357ME

These specifications are subject to change without prior notice. The machine depicted may vary from the actual machine. Please contact our nearest office for latest specifications. Accessories shown here are not part of the standard equipment. Performance of the machine may vary with site and operating conditions encountered.

HITACHI

Reliable Solutions

BX100 SHINRAI POWER

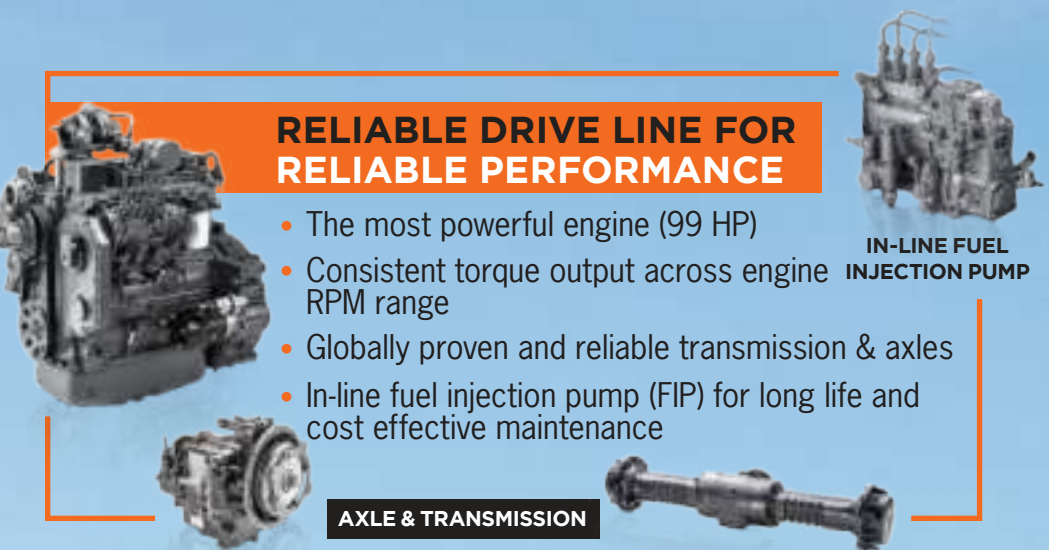
• RELIABLE • TRUSTWORTHY • CAPABLE

YOUR STRONGEST PARTNER 4x4



Model	Operating Weight	Engine	Bucket Capacity
BX 100 SHINRAI POWER	8,600-8,800 Kg	99 HP	Backhoe : 0.18 m³ / 0.26 m³ / 0.30 m³ Loader : Standard - Tilt Bucket : 1.1 m³ Optional - 6-in-1 Bucket : 1.0 m³





RELIABLE DRIVE LINE FOR RELIABLE PERFORMANCE

- The most powerful engine (99 HP)
- Consistent torque output across engine RPM range
- Globally proven and reliable transmission & axles
- In-line fuel injection pump (FIP) for long life and cost effective maintenance

IN-LINE FUEL INJECTION PUMP

AXLE & TRANSMISSION

RELIABLE STRUCTURES FOR LONG LIFE AND SUPERIOR PERFORMANCE IN TOUGH CONDITIONS

- Strong and tested structures for tough operations
- Higher reaches of loader and backhoe attachments for faster and effortless performance
- Manufactured with high grade steel through robotic welding

ROBUST STRUCTURES



MAXIMUM COMFORT AND SAFETY



CLEAR VIEW OF THE LOADER BUCKET



SPACIOUS AIR CONDITIONED CABIN





EASY AND LOW-COST MAINTENANCE

- Provides better performance with increased fuel efficiency
- High/Low pressure unloader systems ensure optimum flow of hydraulic oil.



Engine Oil	250 Hours
Transmission Oil	1000 Hours
Axle Oil	1500 Hours
Hydraulic Oil	4500 Hours
Coolant	6000 Hours
Engine Oil Filter	250 Hours
Fuel Filter	500 Hours
Primary Air Filter	1000 Hours
Secondary Air Filter	3000 Hours
Hydraulic Filter	500 Hours
Hydraulic Tank Breather	2500 Hours
Transmission Filter	1000 Hours

BX100

SHINRAI POWER

4x4