

## Mixer

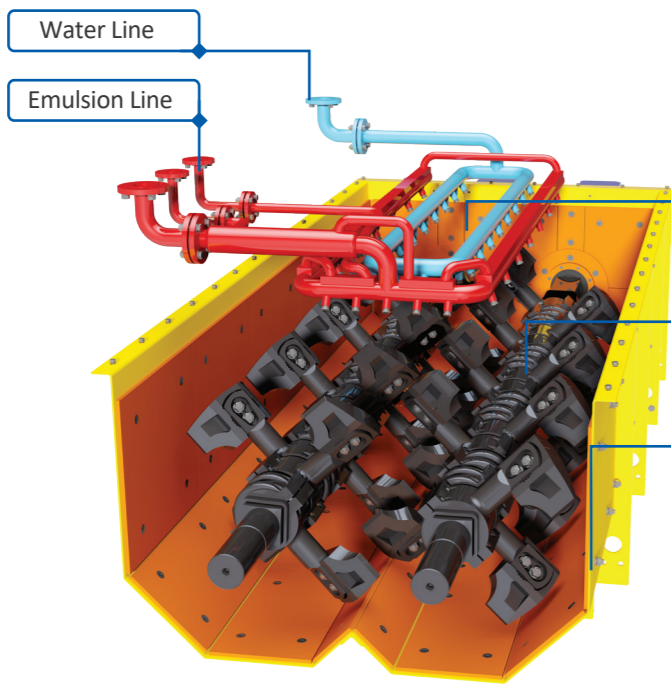
coldFALT's mixer is specially designed for producing all kinds of cold & wet mixes with high accuracy to meet the most demanding requirements of the most challenging infrastructure projects all around the world.

Twin-shaft mixer design ensures high quality of the mixture at maximum production capacity with paddles & arms made from wear-resistant material, driven by two synchronized motors.

Homogeneous spraying of the water and emulsion is provided via special design multi-nozzle spraying bars at the top of the mixer.

All wear plates of the mixer are made of "HARDOX" special metal material for long-lasting operational time.

coldFALT's simple but very effective bolted mixer design ensures high interchangeability and easy maintenance of all components, which reduces service time and cost.



# coldFALT

## Cold and Wet Mix Plants Overview

Water and emulsion injection nozzles are placed in a way to ensure homogeneous distribution for perfect mix quality.

Mixer shaft and paddles are produced with highly wear resistant materials.

Wear plates cover all surfaces inside the mixer.

Product Silo

Cement Silo

Control Cabin

Emulsion or water tank

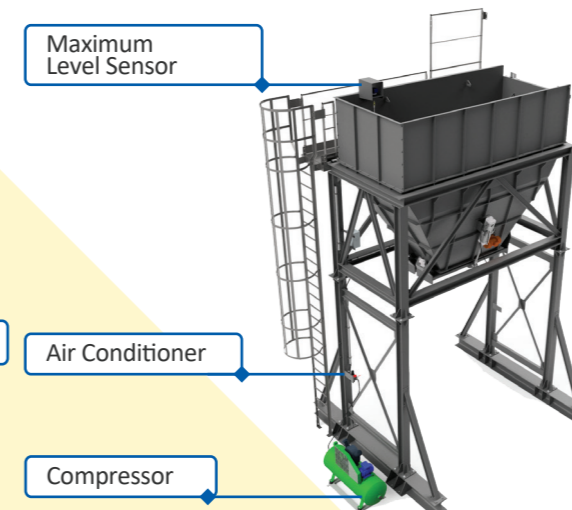
Mixer

## Cement Dosing System



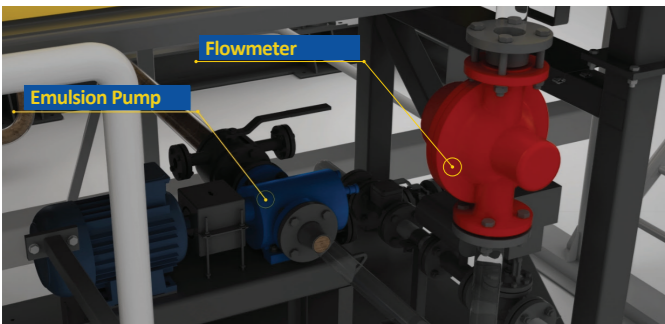
Cement dosing system consists of cement silo with capacity varying from 50m<sup>3</sup> to 100m<sup>3</sup> and equipped with air shock to prevent clogging, rotary valve and manual valve for precise dosing. Material is transferred into the mixer via screw conveyor. Weighing and dosing system with loadcells is also available as an option.

## Product Silo



Product silo of the coldFALT Cold & Wet Mix Plants has a standard volumetric capacity of 15m<sup>3</sup> and equipped with no.2 pneumatically actuated discharge gates and safety maximum level sensor to prevent overloads. Compressor, the main unit of the plant's pressurized air system is also located at the base of the silo legs together with the air conditioner.

## Emulsion Dosing System



Emulsion dosing system is equipped with pump and the material flow is controlled via frequency inverter and emulsion flowmeter.

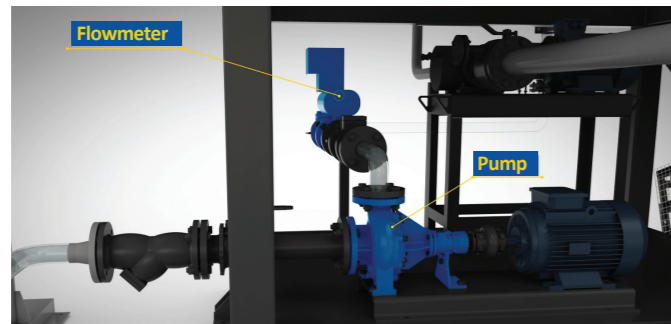
## Control Cabin



Control cabin of coldFALT is designed as dust and waterproof to endure harsh environmental conditions of the production sites. Ease of use with PC-based automatic and panel-based semi-automatic control systems.

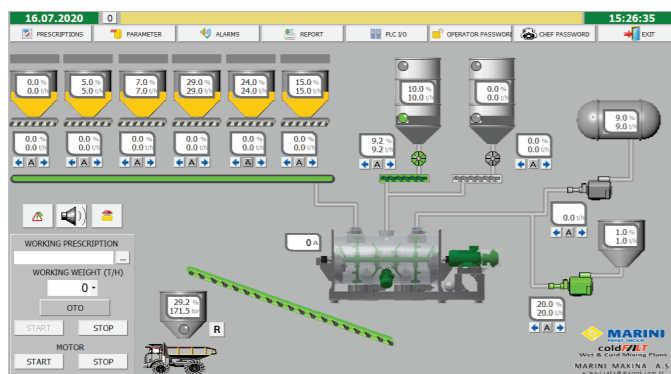
Standard cabin dimensions: 2,4x2,4x2,6m.

## Water Dosing System



Water dosing system is equipped with pump and KROHNE electromagnetic flowmeter for precise dosing and absolute accordance to the mix recipe.

## Automatic Control System



Automatic control software designed by MARINI TURKEY engineers allows setting mix recipes, tracking and adjusting real-time material flow as well as archiving the production logs.



ColdFALT Animation

Manual Valve & Rotary Valve

Air Shock

Air Conditioner

Compressor

RAP Feeding Bunker

## Cold Aggregate Feeders / Optional RAP Feeding Bunker

In default configuration, 5x11m<sup>3</sup> for container transportation and 5x24m<sup>3</sup> for standard version, transported via TIR. RAP bunker can be added on request.



UKRAINE - coldFALT400 up to 400t/h

Ukraine is where MARINI TURKEY maintains a market leader role in respect to both asphalt plants and bitumen engineering machinery. In recent years we have accomplished many projects in different parts of the country and the demand for our products is increasing rapidly.



OMAN - coldFALT400 up to 400t/h

Containerized design of MARINI coldFALT thanks to its compact dimensions allows to ship it overseas at low costs to provide even the most remote regions with the best performance in stabilization mix production. High quality of the product and highly responsive after-sales service - is the key of our success.



GEORGIA - coldFALT200 up to 200t/h

coldFALT has been used for many years in Georgia, where our products are widely presented. Automatic dosing of the emulsion and cement at the needed ratio according to the recipe provides the ease of usage and tracking and logging of the amount of the used material.



IRAQ - coldFALT400 up to 400t/h

There are several worksites within Iraq that rely on coldFALT's superior performance and robustness which eventually led us to be the market leader. The reason behind success of coldFALT in Iraq; high quality of the components, ease of use and economic operation.



JORDAN - coldFALT600 up to 600t/h

coldFALT has proven itself as the reliable partner even in the most harsh environments like Jordan without any decrease in capacity and functionality even at the 7/24 uninterrupted production. We are proud to participate in the improving of Jordan infrastructure.



TURKEY - coldFALT400 up to 400t/h

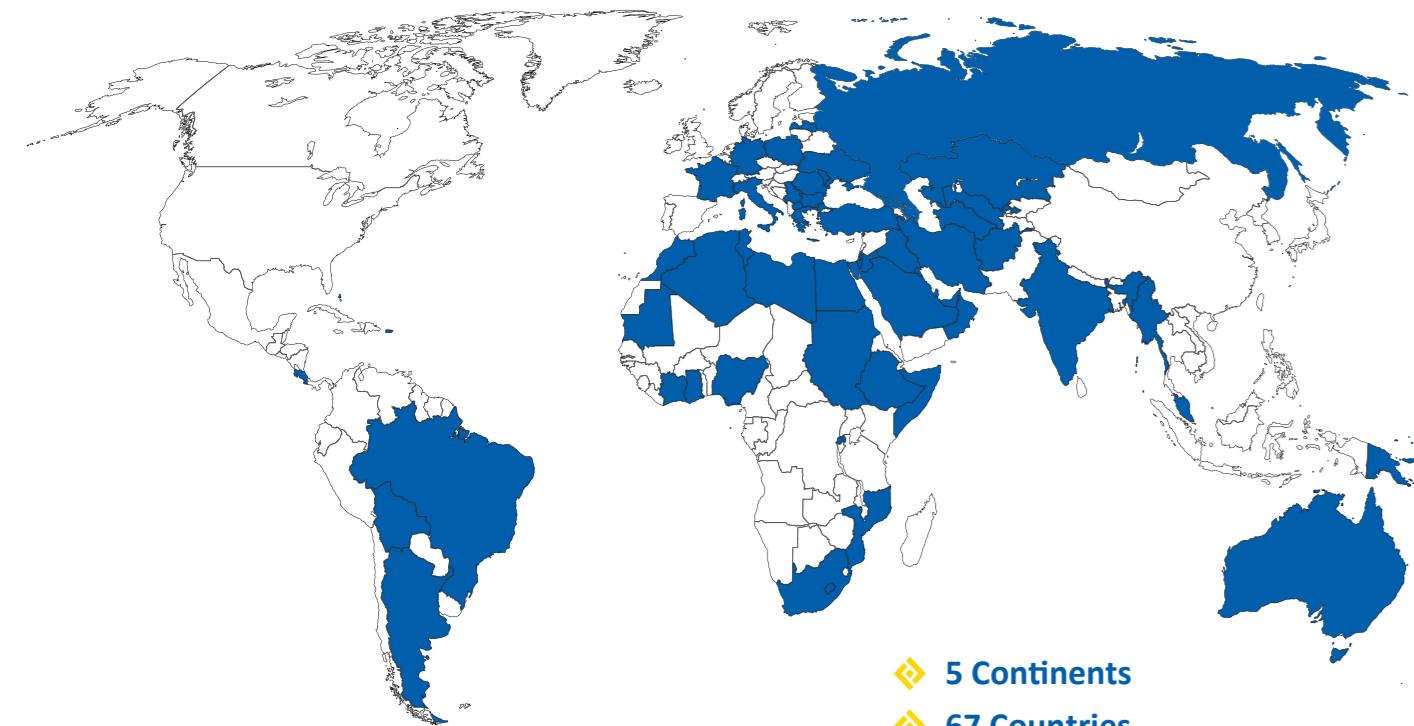
Modular design of our coldFALT wet/cold mix plant allows us to add new options to the existing system easily even after the long time of operation. Flexibility is the main reason for preference for our customers, which makes it possible to use our machinery in totally different projects in the future.





## coldFALT Cold / Wet Mix Plant

- ◆ Diversification of plants at **different capacities in the range of 200-600t/h**, in order to respond to different needs of road, railway, airport and other infrastructure projects.
- ◆ Fully controlled production of mechanical stabilization, cement stabilization and cold asphalt mixtures in excellent quality.
- ◆ Specially designed twin shaft mixer for perfect mixing quality.
- ◆ Cold mix plants have been designed for various production of homogeneous **cold/wet mixes with aggregate, water, cement, reclaimed asphalt and bitumen emulsion**.
- ◆ Simple but functional design, together with the standardized production of coldFALT allows easy maintenance, interchangeability of the components and shortens the delivery time of needed spare parts as well.
- ◆ Dosing belt flow sensors stop the system automatically when aggregate feeding is interrupted.
- ◆ Capacity of dosing belts, ratio of cement, bitumen emulsion, water and foam bitumen in the mix can be adjusted from control cabin via frequency converter.
- ◆ Fully automatic control of production with PLC + computer control system, which also allows storage and reporting of all production data.
- ◆ Compact design fits into **40' container** (plants with 200 and 400t/h capacity) which provides easy and economic transportation.
- ◆ Robust structure ensures safe transportation and long-time operation even in the most harsh and challenging environments.



MARINI MAKİNA A.Ş. Export Network

- ◆ 5 Continents
- ◆ 67 Countries
- ◆ More than 2500 products



MARINI MAKİNA A.Ş.

1. OSB Kırmızı Hanlığı Caddesi No: 1

06935 Sincan - Ankara / TURKEY

Tel: +90 (312) 386 33 22

Fax: +90 (312) 386 33 23

info@marini.com.tr

www.marini.com.tr

Coordinates:

39,967166, 32,552128



www.marini.com.tr - info@marini.com.tr

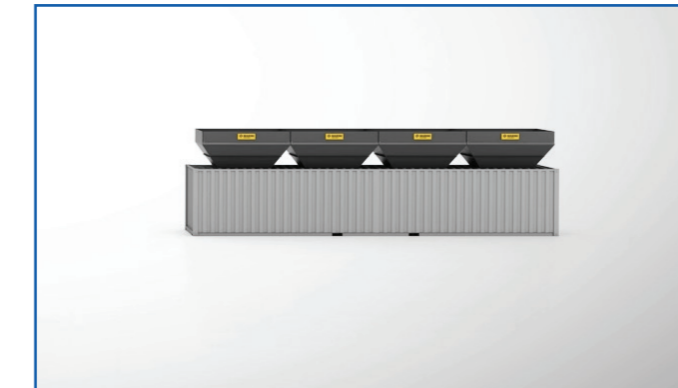
## coldFALT Cold / Wet Mix Plant

MARINI coldFALT Cold and Wet Mix Plant, which is designed for mechanical stabilization, CTB (Cement Treated Base) stabilization and cold asphalt mixtures, always runs smoothly even on the most challenging projects.

Type	Capacity	Mixing Materials	Transportation	Cement Dosing	Control System
wetFALT400	400 t/h	Water + Aggregate	5x40' Container or 5x TIR	Available as an Option	Semi and Full Automatic Control System on PC
wetFALT600	600 t/h	Water + Aggregate	5x40' Container or 5x TIR	Available as an Option	Semi and Full Automatic Control System on PC
coldFALT200	200 t/h	Emulsion + Aggregate* (Recycled material dosing as an option)	5x40' Container or 5x TIR	Available as an Option	Semi and Full Automatic Control System on PC
coldFALT400	400 t/h	Emulsion + Aggregate* (Recycled material dosing as an option)	5x40' Container or 5x TIR	Available as an Option	Semi and Full Automatic Control System on PC
coldFALT600	600 t/h	Emulsion + Aggregate* (Recycled material dosing as an option)	5x40' Container or 5x TIR	Available as an Option	Semi and Full Automatic Control System on PC

\* Water dosing is also available.

### Container Transportation of Cold / Wet Mix Plant



Container versions of wetFALT and coldFALT are easily fitting into 40' containers which allows them to be shipped all over the world at feasible costs.

### Truck Transportation of Cold / Wet Mix Plant



Compact size of coldFALT and wetFALT allows easy land transportation via standard truck.